



3260, 3270, 3280 & 3290 Circle Jig Owners Manual

Please Read Carefully!

Parts List:

Please identify and verify that you have all of the hardware shown below prior to assembly. Parts listed below are not shown in the hardware drawings. Refer to photos in the instructions:

Part	Description	Quantity
4024	24" Double Track, 3260	1
4048	48" Double Track, 3270	1
4072	72" Double Track, 3280	1
4096	96" Double Track, 3290	1
3724L	24" Tape Measure, 3260	1
3748L	48" Tape Measure, 3270	1
3796L	96" Tape Measure, 3280 & 3290.....	1
3260A	Pivot	1
3260B	Pivot Spacer.....	1
3260C	Bracket.....	1
3260D	Cursor.....	1
3200D	Pencil Holder	1
3200P	Router Plate.....	1
3200S	Plate Spacer.....	1
4973	Router Plate Hardware.....	1



Part#	Description	Qty.
5770B	1/2" Screw	1

Part#	Description	Qty.
NUT015	Nut	2

Part#	Description	Qty.
5760B	Oval Nut	3

Part#	Description	Qty.
5863	Ratchet Handle	1

Part#	Description	Qty.
MF010	3/4" Screw	4

Part#	Description	Qty.
MF020	1-1/4" Screw	4

Part#	Description	Qty.
WB002	Washer	2

Part#	Description	Qty.
WN001	Nylon Washer	1

Part#	Description	Qty.
MF025	1-1/2" Screw	2

Part#	Description	Qty.
3200B	Spacer	1

BEFORE BEGINNING

Identify and verify that you have all the parts listed. Read the instructions at least once, familiarizing yourself with the parts before beginning. You'll need a #3 Phillips screwdriver for assembly.

MOUNT ROUTER & ROUTER PLATE

Follow the directions in the *4973 Plate Hardware*. Install the hardware on the Router Plate (*3200P*) and adjust it for your router (*a plunge router works best*), but don't attach the router to the Router Plate yet. We offer an optional drill-style plate (*3200PD*) that can be drilled for a semi-permanent router mounting. We also offer a plate to use with our Angle-Ease (*Purchase Angle-Ease separately, plate only is PN 3200AP*) for more creative circle making.

If you have the *3260 or 3270 Circle Jig*, cut two blocks of wood 2-3/4" long and lay the 24" or 48" Double Track (*4024 or 4048 depending on model*) on the two blocks as shown. Insert two 3/4" screws (*MF010*) thru the two countersunk holes nearest the U-shaped cutout in the Router Plate (*3200P*) and start nuts (*NUT015*) on the ends of the screws. *See fig. 1*

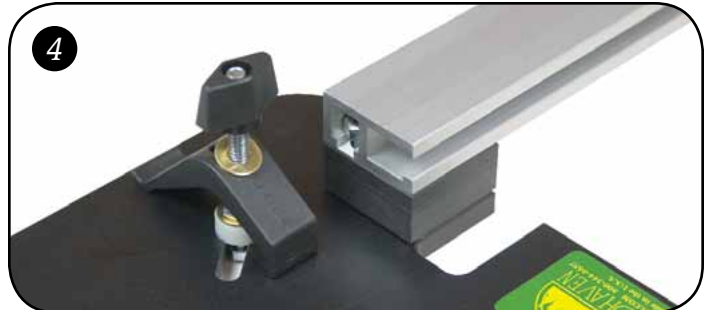
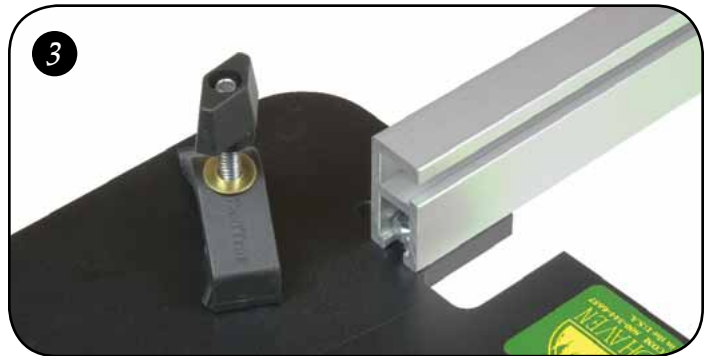
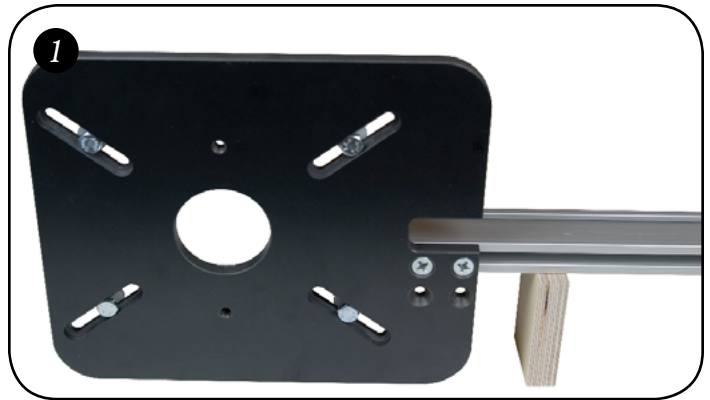
If you have the *3280 or 3290 Circle Jig*, cut two blocks of wood 2" long and lay the 72" or 96" Double Track (*4072 or 4096*) on the two blocks of wood as shown. It's important with tracks over 48" long that they be mounted in this fashion to reduce flexing, but you can also use this method for the shorter tracks on the 3260 & 3270 if desired. Insert two 1-1/2" screws (*MF025*) thru the two countersunk holes farthest from the U-shaped cutout in the Router Plate (*3200P*). Install the spacer (*3200B*) on the screws and start nuts (*NUT015*) on the ends of the screws. *See fig. 2.*

Slide the nuts in the router plate onto the end of the Double Track until the end of the track is even with the opening in the plate, then tighten the two screws firmly. *See fig. 3 & 4.*

ASSEMBLY FOR CIRCLES UNDER 10" IN DIAMETER

If you're cutting circles under 10" in diameter, install the Plate Spacer (*3200S*) on the bottom of the Router Plate using two 3/4" screws (*MF010*). *See fig. 5.*

Insert two 1-1/4" screws (*MF020*) thru the countersunk holes in the Pivot (*3260A*). Set the Pivot Spacer (*3260B*) on the screws and start oval nuts (*5760B*) on the ends of the screws. Slide the Bracket (*3260C*) on the oval nuts, positioning it even with the end of the Pivot/Pivot Spacer and flush with the edges of both, then tighten the screws. *See fig. 6.*



ASSEMBLY FOR CIRCLES OVER 10" IN DIAMETER

If you're cutting circles over 10 in diameter, insert two 3/4" screws (**MF010**) thru the countersunk holes in the Pivot (**3260A**) and start oval nuts (**5760B**) on the ends of the screws. Slide the Bracket (**3260C**) on the oval nuts, positioning it even with the end of the Pivot and flush with the edge, then tighten the screws. *See fig. 7.*

ROTATE PIVOT TO INCREASE CAPACITY

The capacities given are figured with a 1/2" bit. With the Pivot in the position shown in **fig. 6 & 7**, the 3260's maximum capacity is 45", the 3270's maximum capacity is 93", the 3280's maximum capacity is 141" and the 3290's maximum capacity is 189".

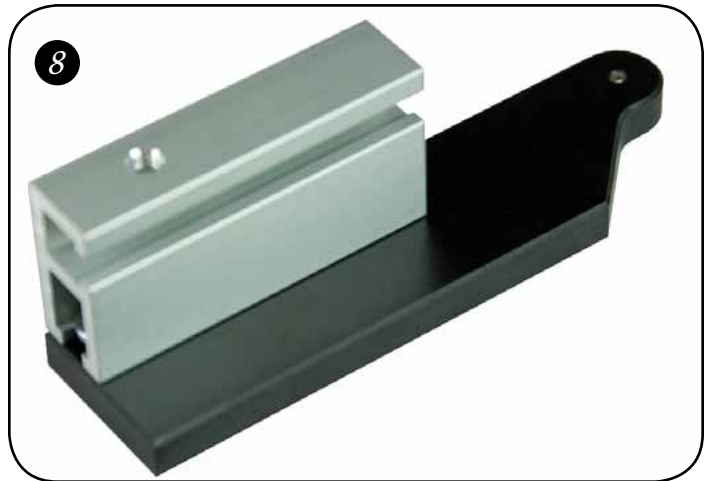
The Pivot may be rotated on the Bracket 180° to increase the maximum capacity of the Circle Jig by 16", but the Cursor will not read correctly in this position. *See fig 8.*

ADDITIONAL ASSEMBLY

Install a washer (**WB002**) on the stud of the ratchet handle (**5863**). Insert the stud of the ratchet handle thru the slot, then the hole, in the Bracket (**3260C**). Start an oval nut (**5760B**) on the end of the stud. *See fig. 11.*

Slide the Double Track/Router Plate on to the oval nut. Attach the tape measure (**3724L or 3748L**) to the top front edge of the Double Track. *See fig. 10.*

Lay the nylon washer (**WN001**) over the threaded hole in the top of the Bracket. Attach the Cursor (**3260D**) to the Bracket (with the nylon washer between them) using the 1/2" screw (**5770B**) and a washer (**WB002**). *See fig. 11.*



USING THE CIRCLE JIG

Install your router/bit on the router plate. The Circle Jig is designed to be mounted on top of the work, or at the same level as if it were on top of the work. Drill a 1/8" pilot hole 1/4" deep in the work for the Pivot pin to set in. If you prefer, you can remove the pin and drill & countersink the Pivot, then use a flat head wood screw to connect the Pivot to the work.

If you don't want to drill a pilot hole in the work, double stick tape a 1/2" thick spacer to the work and drill the hole in it. You need to compensate for raising the Circle Jig 1/2" by making a 1/2" thick spacer to place between the Double Track and the Router Plate (3260 & 3270) or between the Router Plate and the Plate Spacer (3280 & 3290). You'll need to swap the 3/4" screws for the 1-1/4" screws (MF020).

The Cursor reads the **RADIUS** of the circle on the tape measure and you need to double that measurement to get the **DIAMETER**. Make sure to re-adjust the Cursor if you change bit diameters. Measure from the cutting edge of the bit to the center of the pivot pin and adjust the Cursor so you can read this dimension on the tape measure. *See fig. 12.*

ROUTING & DRAWING

Insert the pivot pin in to the pilot hole. Loosen the ratchet handle and slide the bracket along the track to the dimension desired, then tighten the handle.

When cutting the inside edge of a circle, swing the router clockwise. When cutting the outside edge of a circle, swing the router counterclockwise.

Insert the pencil holder (3200D) in the bit opening of the router plate, insert a pencil (with a blunt point - like a golf pencil) in the pencil holder to draw the desired circle. *See fig 13.*

ACCESSORIES

Longer bars (PN 3280XL - 141/157" max. capacity, includes 72" bar & tape, or PN 3290XL - 189/205" max. capacity, includes 96" bar & tape.) are available to increase the size of circles that can be made with the 3260 & 3270.

The Micro Adjuster (PN 3265) offers fine tuning of the circle size with up to 1/2" of fine adjustment. *See fig 14.*

We offer an optional drill-style plate (PN 3200PD) that can be drilled for a semi-permanent router mounting.

We also offer a plate to use with our Angle-Ease (Purchase Angle-Ease separately, plate only is PN 3200AP) for more creative circle making. *See fig 15.*

©Copyright WOODHAVEN INC. 4/27/06
(800) 344-6657 or WWW.WOODHAVEN.COM

