

# WOODHAVEN

**6002 & 6004  
Horizontal  
Router Table  
Owners Manual**  
*Please Read Carefully!*

### Parts List:

Please identify and verify that you have all of the hardware & parts shown prior to assembly. The parts described in this box are identified in the instructions:

Part	Description	Quantity
4002	2" Double Track	4
4004	4" Double Track	2
4006	6" Double Track	2
4009	9-1/4" Double Track	2
4024	24" Double Track	2
6000B	Crank Support	1
6000C	Crank Handle, 2 piece set	1
6000D	Phenolic Fence	2
6000F	Dust Chutes, set of 2	1
6000HD	Hold-All Kit	1
6000N	Bit Insert	2
6000S	Phenolic Sides, Pair	1
6000T	Phenolic Table	1
224	Guard	1
6000PA	Angle-Ease Router Plate	1
1470X	Angle-Ease	1
<i>ONE of the Angle-Ease Motor Blocks below:</i>		
1470B	Angle-Ease 3.5" motor block	1
1472B	Angle-Ease 4.2" motor block	1



<b>Part#</b>	<b>Description</b>	<b>Qty.</b>
HB040	1-1/4" Bolt	16

<b>Part#</b>	<b>Description</b>	<b>Qty.</b>
MF010	3/4" Screw	4

<b>Part#</b>	<b>Description</b>	<b>Qty.</b>
5770B	1/2" Screw	4

<b>Part#</b>	<b>Description</b>	<b>Qty.</b>
6000G	Track Guide	4

<b>Part#</b>	<b>Description</b>	<b>Qty.</b>
WS002	Washer	20

<b>Part#</b>	<b>Description</b>	<b>Qty.</b>
MF020	1-1/4" Screw	8

<b>Part#</b>	<b>Description</b>	<b>Qty.</b>
5771B	3/4" Screw	6

<b>Part#</b>	<b>Description</b>	<b>Qty.</b>
5503	Thumb Screw	2

<b>Part#</b>	<b>Description</b>	<b>Qty.</b>
5760B	Oval Nut	36

<b>Part#</b>	<b>Description</b>	<b>Qty.</b>
MF015	1" Screw	4

<b>Part#</b>	<b>Description</b>	<b>Qty.</b>
5859	Ratchet Handle	4

## INSTALL CRANK HANDLE, ETC.

Get the crank handle (**6000C**). There are two assemblies to this part - one has a crank & nut, the other has a bolt, and both have a mounting bracket with two holes. Attach the bolt to the back top of the router plate with two 1/2" screws (**5770B**) thru the two holes in its mounting bracket, but leave them loose for now. *See fig. 10.*

Install the crank assembly on the back of the crank support (**6000B** - *the side with the machined ends*) using two 1/2" screws (**5770B**) thru the two holes in its mounting bracket, but leave them loose for now. *See fig. 10.*

From the front of the support, insert a washer (**WS002**) on each stud of the ratchet handle (**5859**), insert the stud thru the hole at each end and start an oval nut (**5760B** - *smooth side first*) on the end of the studs. *See fig. 10 & 11.*

Slide the support/oval nuts onto the 24" tracks until the nut of the crank lines up with the bolt on the plate. Turn the crank to screw the nut onto the bolt approximately 1", then tighten the ratchet handles on the crank support and the four 1/2" screws (**5770B**). *See fig 10 & 11.*

## ATTACH ANGLE-EASE, ROUTER & GUARD

Assemble and mount the Angle-Ease (**1470X**) to the router plate following the instructions provided with it. After completing that, mount your router in the Angle-Ease. Insert the two thumb screws (**5503**) through the slots of the Guard (**224**) and into the threaded holes in the router plate (**6000PA**).

## MOUNT ZERO-CLEARANCE INSERT

Mount a zero-clearance insert (**6000N**) in the recessed opening in the table using two 3/4" screws (**MF010**). An extra insert is provided and extras may be ordered. *See fig. 12.*

## USING THE HORIZONTAL ROUTER TABLE

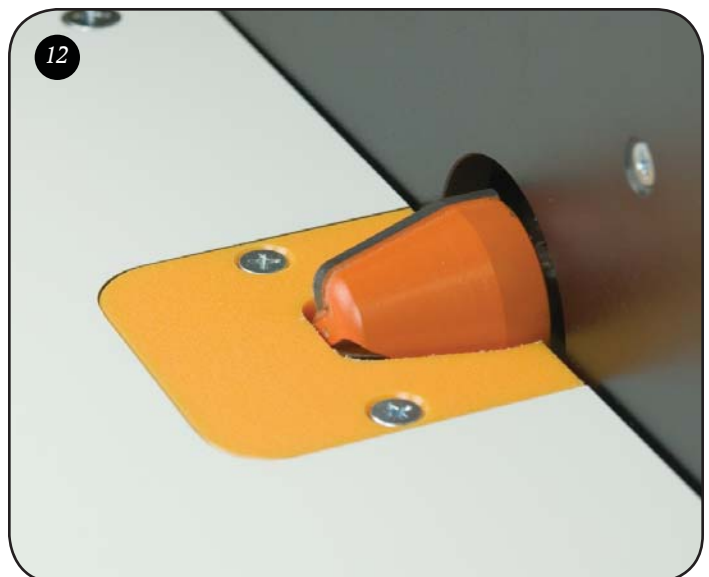
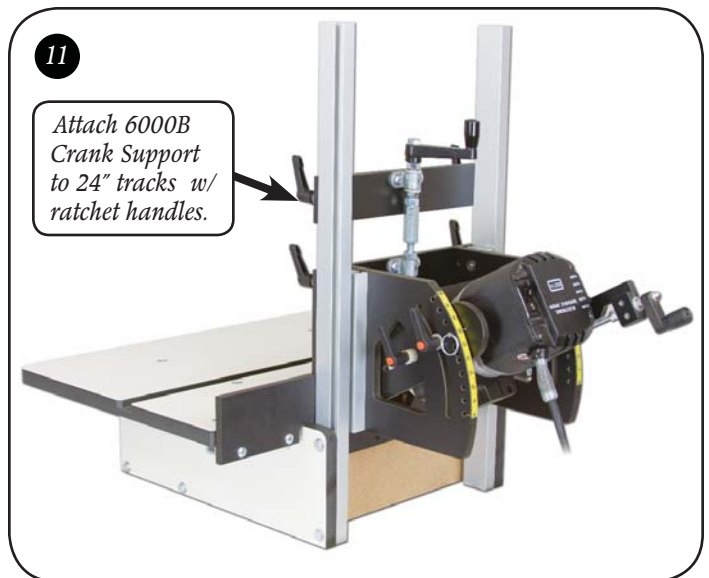
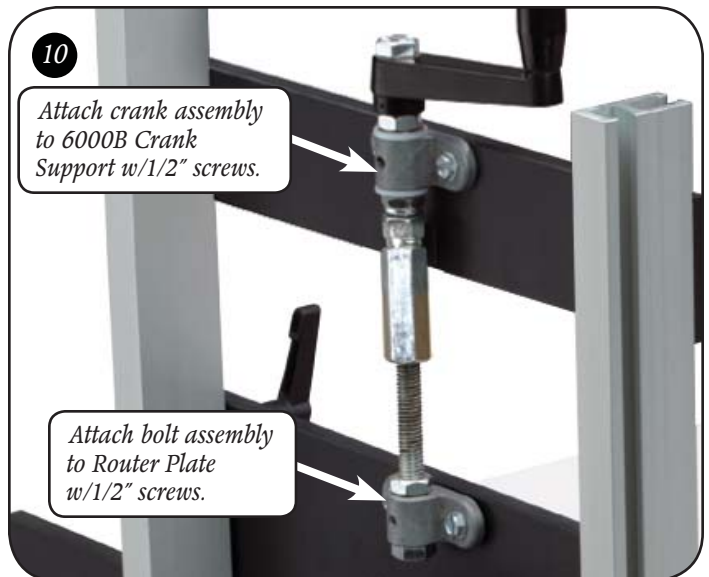
The crank provides 1-3/8" of fine bit height adjustment. By loosening the two ratchet handles on the crank support, you can move the entire router plate/crank support assembly up or down for a great range of coarse adjustment.

Make sure the two handles on the router plate are loosened and the two handles on the crank support are tight before attempting to turn the crank. Make sure you tighten the router plate handles after all height adjustments.

Clamp or bolt the horizontal table to a workbench before using. The horizontal table can be used for mortising, edge routing, vertical panel bits, cutting tenons, etc. For safety, we recommend the bit be kept under the work/table during use.

For mortising, we recommend our optional **6010 or 6011 Mortising Table**. For additional safety and routing consistency we recommend using the **6000 Hold-All Kit** we include.

There is an extra set of mounting holes in the Phenolic Sides (**6000S**) which allow you to elevate the 9-1/4" Double Tracks/Table 3/4". This extra table height may be necessary depending on the how you have the Angle-Ease mounted. There are optional 9-1/4" Ultra Tracks (**4009** - *two required*) available that will elevate the table 2-5/8".



**BEFORE BEGINNING**

Identify and verify that you have all the parts listed. Read the instructions at least once, familiarizing yourself with the parts, before beginning. You'll need a #3 Phillips screwdriver and a 7/16" wrench for assembly.

**ANGLE-EASE ASSEMBLY**

Assemble the Angle-Ease (1470X) according to the instructions that are included with it and set it aside for now.

**ATTACH PLATE & TRACKS**

The router plate (6000PA) can be mounted in one of two ways. If the bit opening in the router plate is placed at the top, the router will tilt down and the bit will tilt up. If you place the bit opening in the router plate at the bottom, the router will tilt up and the bit will tilt down. Decide

want to tilt the router/bit. *See fig. 1 & 2.*

Insert the ratchet handles (5859), insert a washer stud, insert the studs thru the top two outer plate and start an oval nut (5760B - smooth side first) on the ends of the studs. *See fig. 1.*

**NEW PIC**

Install four 1" screws (MF015) thru the four countersunk holes in the router plate and start a track guide (6000G - first) on the ends of the screws. The hole gets tighter the screw in the track guide, reducing vibration loosening the screw. *See fig. 1.*

**NEW PIC**

Install Double Track (4024) on the oval nut and two track guides on each short side of the router plate. Position the Double Tracks so the 1-1/2" wide smooth sides are facing each other and the T-slot sides are facing out away from each other. *See fig. 1 & 2.*

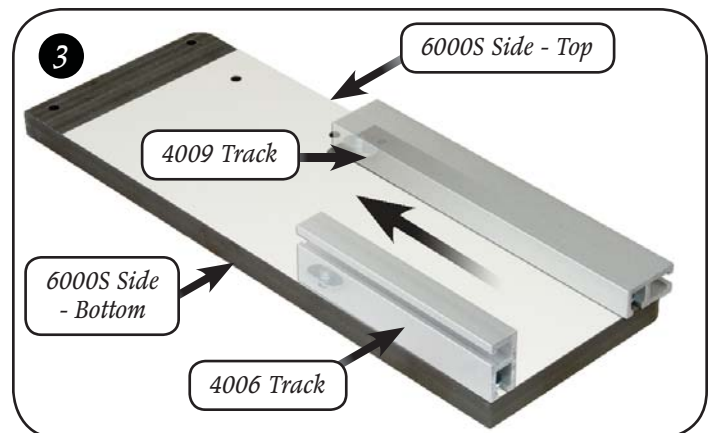
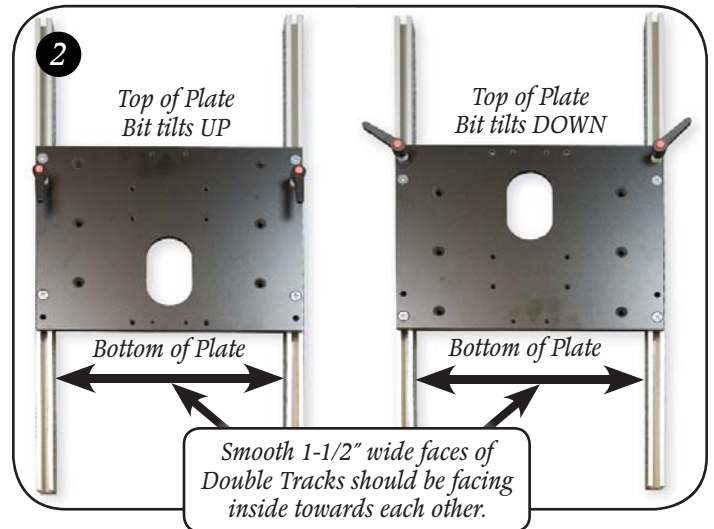
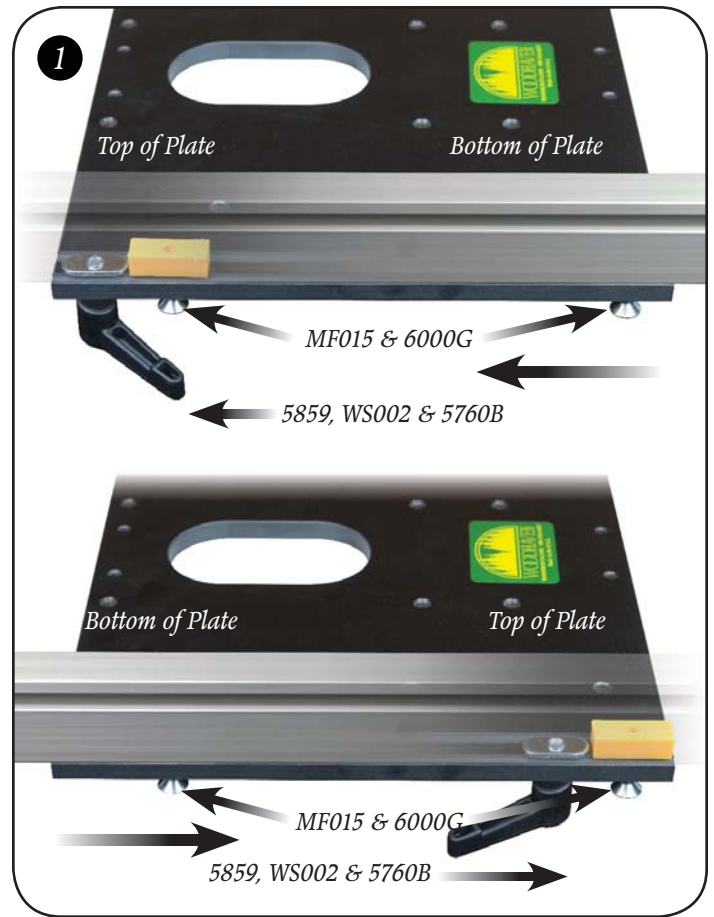
The rib on each side of the router plate should be in the T-slot of the track. Loosely snug all four 1" screws until the track won't slide, then loosen the screws until it slides smoothly but not loosely. There should be some tension on the track. Center the router plate on the Double Tracks and tighten the ratchet handles. *See fig. 2.*

**ATTACH SIDES & TRACKS**

Install a washer (WS002) on the sixteen 1-1/4" bolts (HB040). Insert the bolts thru the holes shown in the pair of phenolic sides (6000S) and start an oval nut (5760B - smooth side first) on the ends of the bolts. The sides should look like mirror images of each other when done. *See fig. 3 & 8.*

Slide a 9-1/4" Double Track (4009) and a 6" Double Track (4006) onto the oval nuts located near the long edges of each side and tighten the bolts. *See fig. 3.*

Lay the 24" Double Tracks/Router Plate on a flat surface and slide the two sides/oval nuts at the back of the sides on to the two tracks. Square the tracks to the sides, adjust the tracks flush to the bottom of the sides and tighten the four bolts. *See fig. 4.*



Part#	Description	Qty.
MF037	5/8" Screw	2

## ATTACH DUST CHUTES

Get the set of Dust Channels (**6000F**) and insert two 3/4" screws (**MF010**) thru the part with the countersunk holes and two 3/4" screws (**5771B**) thru the remaining part, then start an oval nut (**5760B - flat side first**) on the ends of the screws. Attach a 1-7/8" Double Track to each oval nuts and loosely tighten for now. *See fig. 5.*

Slide the non-cutout Dust Channel/tracks on to the inner most oval nuts on the sides and tighten the bolts, then loosen and retighten the screws holding the channel. Repeat for the other Dust Channel w/cutout/tracks. *See fig. 6 & 7.*

## ATTACH TABLE & FENCE BRACKETS

Install eight 1-1/4" screws (**MF020**) thru the countersunk holes in the phenolic table (**6000T**) and start an oval nut (**5760B - smooth side first**) on the ends of the screws. The four screws/oval nuts in the main field of the table are used to attach the table to the 9-1/4" tracks. Slide the table/four oval nuts onto the tracks, position the table so its approximately 1/32" from the face of the router plate and tighten the screws. *See fig. 8.*

From each side of the table, slide a 4" double track (**4004**) onto two oval nuts on the underside of the table so the T-slot in the edge of the track faces towards the edge of the phenolic table and hangs past it slightly. Center the track on the oval nuts and tighten the screws. *See fig. 9.*

Insert a 3/4" screw (**5771B**) thru the holes in the phenolic fences (**6000D**) and start an oval nut (**5760B - smooth side first**) on the ends of the screws. Slide the oval nuts/fences onto each 4" double track, position the end of the fence 1/32" from the edge of the plate, then tighten the screws. Using a straight edge, loosen the screws holding the 4" double tracks on the phenolic table and adjust the fence faces so they're in line with the face of the router plate, then re-tighten the screws. *See fig. 9.*

