

# WOODHAVEN

## 1440 Parts List:

Part	Description	Quantity
1445	Digital Readout .....	1
1440D	Bracket .....	2
5765B	Offset Oval Nut .....	2
5775B	5/8" screw .....	2
WN002	nylon washer .....	2
5770B	1/2" screw .....	2
1440C	Display Mount .....	1
HB020	1/4-20 x 3/4" bolt .....	2
5521	Knob .....	2

## 1441 Parts List:

*Includes all the parts above, plus the part below.*

1440A	Glide .....	1
-------	-------------	---

# 1440 & 1441

## Digital Readout

*Please Read Carefully!*



### BEFORE BEGINNING

Identify and verify that you have all the parts listed. Read thru the instructions at least once, familiarizing yourself with the parts and process before proceeding. You'll need a #3 Phillips screwdriver.

### WHAT GLIDE DOES YOUR 1435-1437 HAVE?

If you purchased your 1435-1437 EZ Lift before 10/1/10, you'll need to attach a new Glide (**1440A - in 1441 Parts List**) in place of the existing Glide. *See fig. 1 & 2.* If you purchased your 1435-1437 EZ Lift after 10/1/10, move on to the next section of the instructions (back of page) and disregard this section as you already have the 1440A Glide on your EZ Lift.

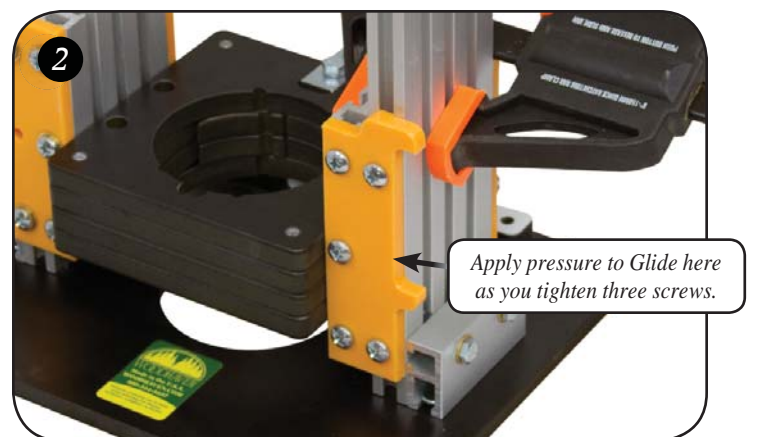
### IF YOU PURCHASED THE 1435-1437 BEFORE 10/1/10

Start by clamping the two Ultra Tracks together. Remove the existing Glide, opposite the motor tightening bolt, by loosening (not removing) the screws enough to slide it off both Ultra Tracks. Make sure you remove the correct Glide! *See fig. 1.*

Remove the existing hardware, one screw at a time, from old Glide and loosely attach this hardware to the new Glide (**1440A**) in the same locations & exactly the same way. Make sure the smooth side of the tighteners are facing the Glide when you attach them. Slide the new Glide into place on the two Ultra Tracks, then tighten the three screws with oval nuts (on the short Ultra Track) as you apply pressure against the edge of the Glide where shown. Remove the clamp. *See fig. 2.*

Snug the two remaining screws to adjust the tension on the tighteners. Do not overtighten or you may strip the tighteners. Then loosen the screws approximately 1/8th turn and test how well the EZ Lift moves by using the crank. Tighten or loosen the screws to adjust the tension on the tighteners according to your preference.

**YOU CAN NOW MOVE ON TO THE NEXT SECTION ON THE BACK OF THIS PAGE.**



### IF YOU PURCHASED THE 1435-1437 AFTER 10/1/10

Attach the two brackets (**1440D**) to the Ultra Track using an offset oval nut (**5765B**) and a 5/8" screw (**5775B**). Tighten the brackets in position, one at the top of the Ultra Track and one near the bottom of the Ultra Track and resting on the short Double Track. Position the offset oval nut of the top bracket so it does not protrude out the top of the Ultra Track. *See fig. 3.*

Get the Digital Readout (**1445**) and read thru the **iGAGING DigiMAG Remote Readout** instructions to familiarize yourself with its parts list. The Slider Sensor Unit (**3**) comes pre-installed on the Digital Scale Beam (**4**). Press the Slider Sensor Unit in the notch of the Glide (**1440A**), moving the Digital Scale Beam in the Slider Sensor Unit as needed. The Connection Cable (**2**) of the Slider Sensor Unit should be sticking out towards the back of the EZ Lift as shown. We have modified the Digital Scale Beam to fit our EZ Lift. Attach the Digital Scale Beam to the two brackets (**1440D**) using a nylon washer (**WN002**) and a 1/2" screw (**5770B**). *See fig. 4.*

The Digital Display Unit (**1**) can be mounted on any magnetic surface using the magnets in the back of it. We also supply a Display Mount (**1440C**) that has the Stand Base for Display Unit (**8**) pre-attached to it. This can attach to the top T-slot of our Router Fence using the two 3/4" bolts (**HB020**) and knobs (**5521**), or be clamped to your router table. *See fig. 5 & 6.*

### USING THE DIGITAL READOUT

You will have extra hardware left over (**5, 6, 7 & 9**) from the **iGAGING** parts list. This is the manufacturers mounting hardware that we don't use. Follow the **iGAGING** instructions regarding the Display Functions. Install the batteries in the back of the Digital Display Unit (**10 - rear view**) to begin using it.

©Copyright WOODHAVEN INC. 10/15/10  
(800) 344-6657 or [www.woodhaven.com](http://www.woodhaven.com)

